

Essay on
violence



Video
Arnhem 2021
2:28

In this work, I unpack the concept of violence by relating movement, clay's plastic properties, and natural forces' images.

LINK TO VIDEO: <https://vimeo.com/514025932>

Wet Flowers



Video
In collaboration with
Rowena Buur
The Netherlands 2020
1:00

Work considering the relation between sexuality and the earth—remarks on queer sexual botany and ecology. It is part of A record of the ecosex movement. In [Imagine The Earth Is Your Lover](#), curated by Annie Sprinkle and Beth Stephens

LINK TO VIDEO: <https://vimeo.com/475879753>

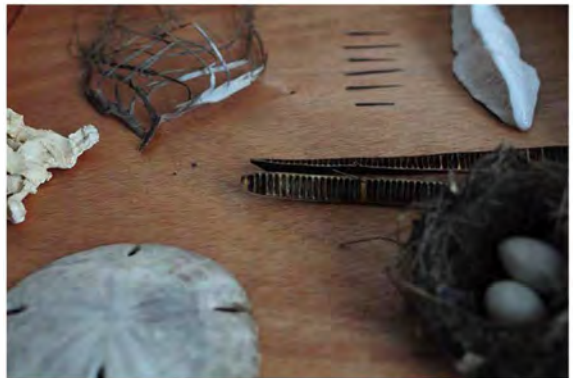
White memory



Installation
Porcelain, wood, and soil
Bogotá 2018

This work is about memory. How morbid and delicate it is to be attached to the past. Keeping alive with micro painful gestures, what already has passed away.

Collections



Installation
Mix media
High- Mid- Low-temperature ceramics
Bogotá, 2017

The endless forms observed in nature are the main stimulating force in my creative work. I have been keen to collect and preserve beautiful natural objects and have created my nature-inspired treasures within their narratives.

These pieces reflect the combination of various experiments with organic materials and different kinds of clay. This installation displays the interconnections among activities such as gathering, modeling, organizing, and caring, which mirror how I approach life. These drawers and showcases are an intimate museography and archaeology of my dialogues with the territory.

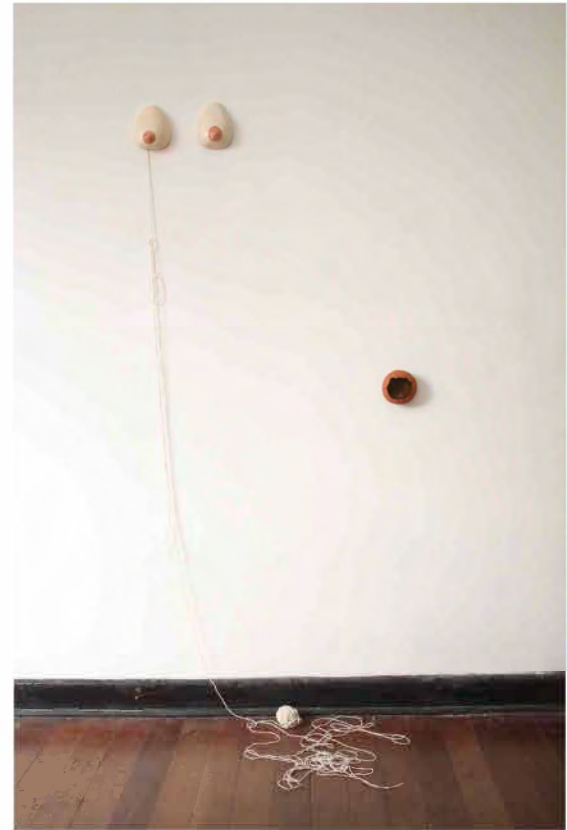
You Dropped your Milk



Ceramics, cotton rope, resin,
and beehive

breasts 14x 4x 11cm each
Terracotta vase 6x6x7cm
Bogotá 2017

This piece is about femininity. The small terracotta vessel in the inferior right part of the picture contains a beehive in resin. Femininity is related to the action of providing, and milk and honey are symbols of abundance and reproduction. The rope hanging from the breast piece rolled around the room moved by the feet of the visitors. In Colombia, we have a popular saying that says “you dropped your milk” when you’ve trespassed your limits. Is limitless providing a feature of femininity?



Virgin



Ceramics and Luffa (vegetable fiber)
40 x 8 x 15cm
Bogotá 2017

This is an organic reflection on the shape of a vagina and its similarities with the Virgin Mary’s representations. In Latin American societies, the veneration of the feminine maternal figure of virgin Mary is highly contrasted with the violence ejected towards women who want to own their sexuality. I immersed an intervened dry Luffa fruit in liquid clay and sculpted it around.